
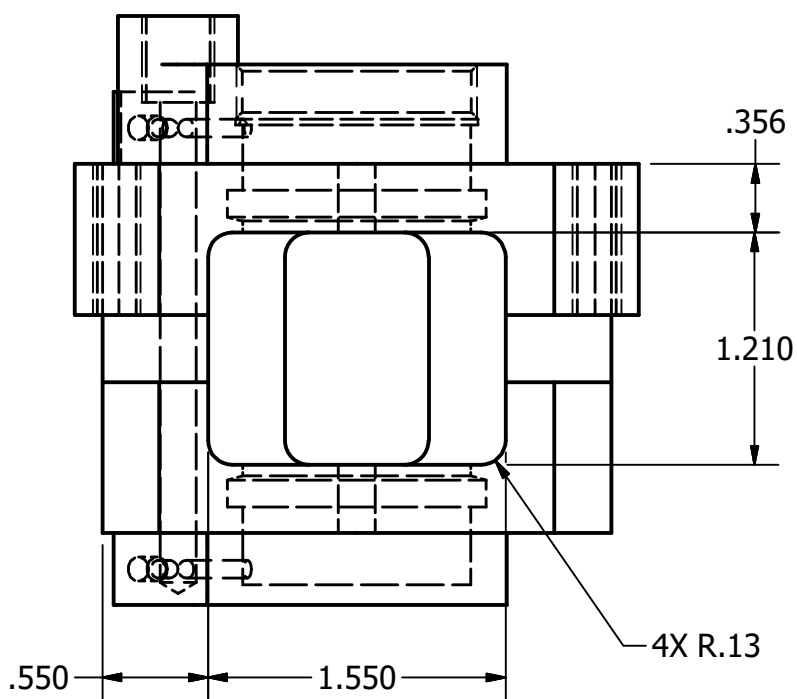
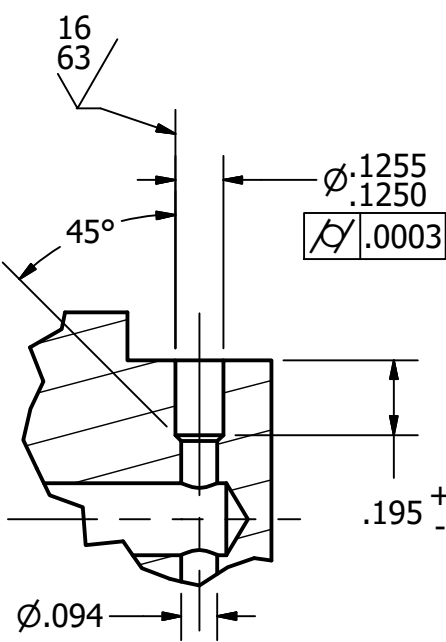
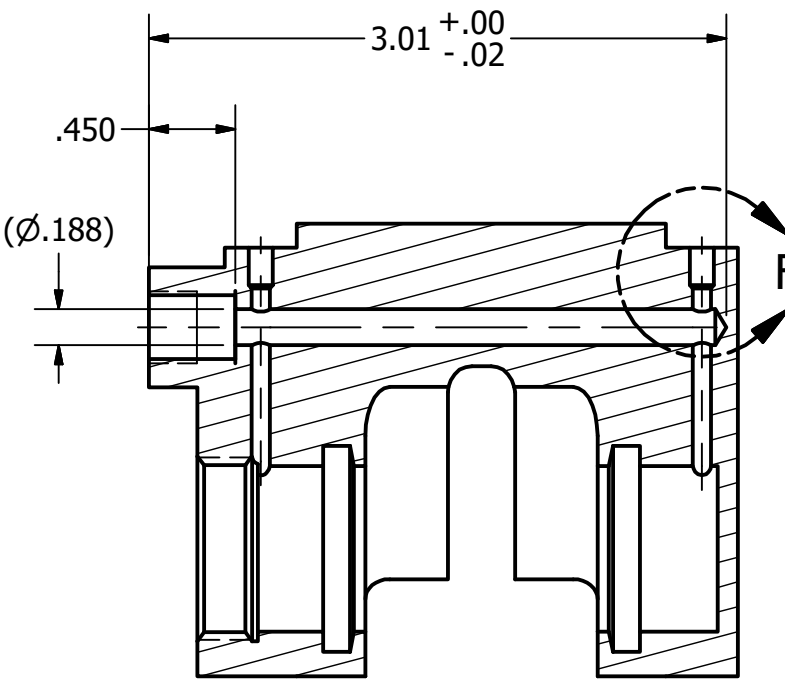
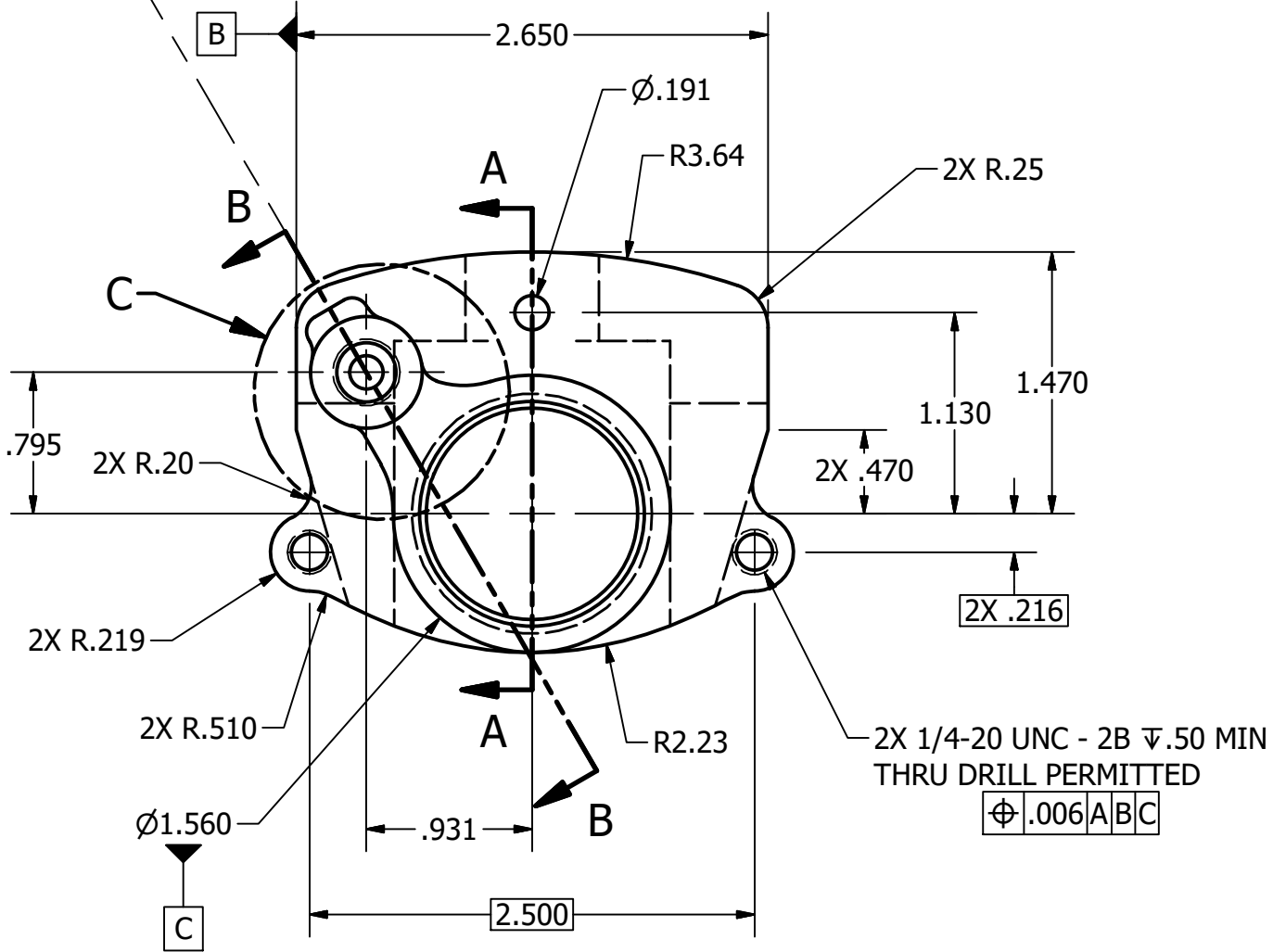
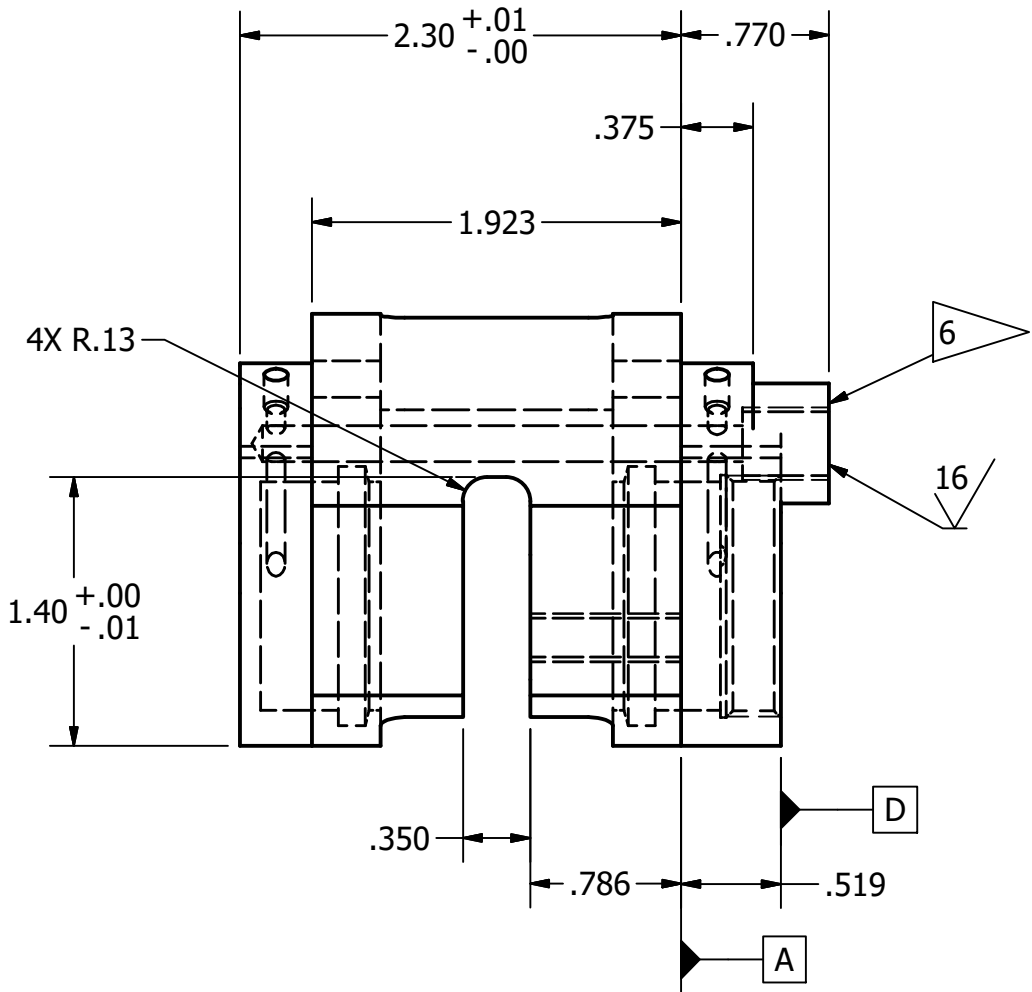



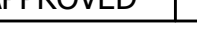
1. INTERPRET DRAWING PER ASME Y14.100-2017
2. MATERIAL: ALUMINUM 7075-T6 PER ASTM B221
3. COATING: BLACK ANODIZE PER MIL-A-8625, TYPE II
4. REMOVE ALL BURRS AND SHARP EDGES. EDGE BREAK .005 - .015
5. ALL DIMENSIONS APPLY AFTER COATING
6.  SEALING SURFACE; MUST BE FREE OF BURRS AND SCRATCHES

Technical drawing of a mechanical part with the following dimensions and tolerances:

- 1 1/4-18 UNEF - 2B
- $\perp .002 \text{ (M) D}$
- $2X 15^\circ \pm 2^\circ$
- $2X \text{ } \varnothing 1.189 \begin{smallmatrix} +.002 \\ -.000 \end{smallmatrix} \text{ (CF)}$
- $2X 45^\circ \pm 5^\circ$
- $2X \text{ } \varnothing 1.349 \pm .001$
- $\text{ } \varnothing .002 \text{ (E)}$
- $32 \text{ } \sqrt{\text{ }}$
- $2X .035$
- $.03$
- $2X .140 \pm .005$
- $.31 \begin{smallmatrix} +.01 \\ -.00 \end{smallmatrix}$
- $2X .220 \begin{smallmatrix} +.010 \\ -.000 \end{smallmatrix}$



DETAIL F  
2 PLACES  
SCALE 2 : 1

UNLESS OTHERWISE SPECIFIED		DESIGNED	G. P. BURDELL		4/19/2019			
<u>DECIMALS</u>	<u>ANGULAR</u>	CHECKED	G. W. WOODRUFF		4/19/2019			
.X ± .1	± .25° (MACH)	APPROVED	H. FORD		4/19/2019			
.XX ± .02	± 5° (BEND)	BRAKE CALIPER BODY						
.XXX ± .010								
SURFACE ROUGHNESS: 125/✓								
INTERPRET PER ASME Y14.5-2009			FORMAT D	SCALE 1 : 1	UNITS IN	275858	REVISION A	PAGE 1/1